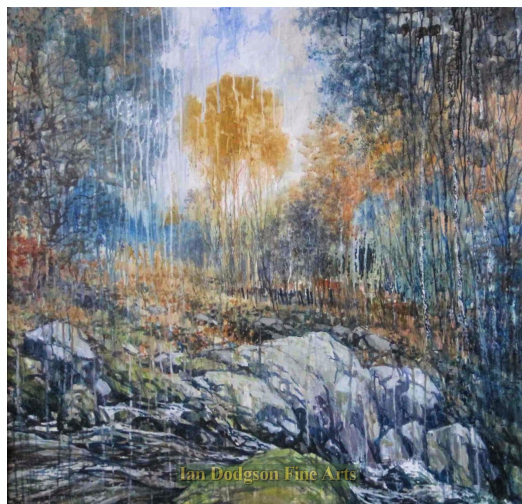


Ian Dodgson Fine Arts

www.iandodgsonfinearts.co.uk

Jeremy Yates PRCA



Falling (Sky Trees Rocks Water) Ogwen

Acrylic on panel

95 x 95 cm

Signed

Stock No. 461





Biography:

Jeremy Yates PRCA

Jeremy Yates went to art colleges in Stafford, Brighton and Chelsea between 1963-68; after teaching and working in London, he and his family moved to North Wales in 1977 to paint the landscape. Over recent years he has taught with the WEA, Field Studies Council, Lifelong Learning (Bangor University) and at the Snowdonia National Park Study Centre, and has exhibited widely in the area. In 1994 he was elected to the Royal Cambrian Academy. He has shown his landscape and figurative works both locally and further afield - most recently in London (Ruth Burchard Annual self-portrait exhibition), with the RCA at Cardiff (Kooywood Gallery) and Swansea (Attic Gallery), as well as at Conwy (RCA gallery).

'For many years I have been interested in painting water and its fluid, transparent and

www.iandodgsonfinearts.co.uk



reflective properties – in the rivers, lakes and rains of North Wales. The painting process I

have evolved reflects both the subject and the medium, water-based acrylic or watercolour

paint, on paper, board or canvas. Paradoxically I am also exploring the driest medium of

charcoal to tackle similar subjects.'